



Geobank 2017

Geobank is a secure and flexible data management solution designed to protect your most valuable asset – your geological data.

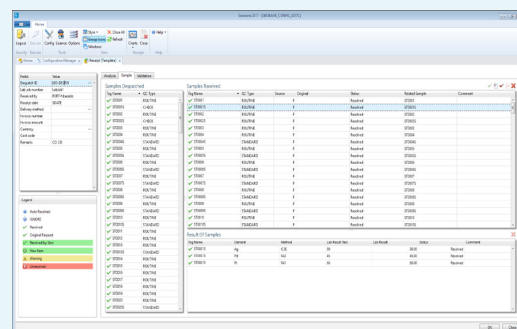
MICROMINE is proud to release the latest version of its industry leading secure and flexible data management solution, Geobank 2017. Now in its 30th year, MICROMINE continues to invest in customer driven development by regularly releasing new software versions which build upon the strengths of its solutions.

In a world where data management is crucial, investing in the appropriate geological software is essential to the successful future of an organisation. Most mining and exploration companies struggle to maintain the quality, integrity and usability of their essential data. Some of the problems with inaccurate data are visible, others unfortunately are not.

Geobank 2017 delivers improved usability, functionality and performance, with a variety of user benefits relevant to both exploration and mining operations.

New Features in Geobank 2017 include:

- **New and improved Sample Tracker** that brings a new user interface as well as batch loading, lab-QAQC resolution, file format detection, improved interactivity and many more changes.
- **Excel lab files** can now be imported by sample tracker.
- Various **usability enhancements** including adding new rows between existing in data views and alternating colours for rows in configuration manager
- Numerous **quality improvements** with the most significant changes being fixes to graphic report display, issues with exported files, and response speed and performance improvements.
- Addition of built-in tabs to **add and edit Metadata** for Sample Tracker and general lookups.
- **Licencing enhancements** including Crypkey licence transfer and network licence improvement.
- **Graphic report logarithmic scales** now have versatile display options and alignment or objects in the designed is significantly more intuitive.
- **Web based help** is now available.
- Support for **Micromine 2016 .dat** file format.



The new receipting module provides an efficient way to reconcile lab results against despatched samples. We have included new configurable options, that allow users to customise their import file formats and create rules to handle lab result variations. .

MICROMINE's secure and flexible data management solution

Geobank 2017 has many enhancements, delivering improved usability, functionality and performance, with a variety of user benefits relevant to both exploration and mining operations.

Quality Improvements

- Fixes to graphic report bar chart annotation, connector, legends, search and design sheet display
- Response speed improved when LAS or general imports are cancelled
- Slow performance has been addressed in variety of places.
- Issues with column settings and decimal places for exports fixed
- Fixes to section view alignment in plan view

Usability

- Data views now support the adding of new rows between existing rows
- Graphic report logarithmic scales now have versatile display options and alignment or objects in the designed are significantly more intuitive
- Scale bars can be configured as adjustable or non-adjustable for graphic report re-pagination
- A 'thousand's separator' can be used when configuring graphic report number formats
- Templates can be sorted in the graphic report designer
- Alternating colours for rows in configuration manager makes searching for specific items easier
- The convention of using a comma for a decimal separator is now supported.
- When multiple data sources are configured, an "Execute with ..." feature is available
- The folder path place holders \$GBWORK and \$GBTEMP are available in all objects which read from or save to files.
- Functionality for Crypkey licence transfer has been added
- Web-based help is now available
- Action-type events are available for Excel imports and advanced reports
- More versatility with whether or not pattern initialisations are applied in data sets
- Run-time selection of sheets is available for Excel import

- Seam colouration is configurable in correlation diagrams
- Improvements in how the visual query builder works with parameters

Sample Tracker

- Automatic resolution or lab checks and standards based on configured rules
- Automatic file format detection
- Batch receipting of multiple assay files in a folder
- Improved interactivity and display options in the QAQC charts
- New built-in view to see sample despatches and results
- Receipts load faster
- Map lab file structures visually by seeing the lab file and the table defining how the data will be imported in the same view
- Simpler management of detection limits
- Lab files are saved into the database during receipt and a built-in view is provided to view the file and results loaded.
- Reports are customisable using the Advanced Reporting module
- Despatches can be saved in draft format

Meta Data Management

- Addition of built-in Data Views to add and edit Metadata for:
- Sample Tracker - edit and monitor the key sample tracker reference data
- General Lookups - edit and all categories and lookups
- The built-in views provide functionality to export data

General

- Improved language support for Excel importer
- Support for Micromine 2016 .dat file format
- A single user can use multiple instances on the same machine on a network licence
- Folders for grouping objects in configuration manager

"We chose Geobank as it fulfilled our data management, validation and reporting criteria. Our internal and external workflows are more sound and consistent, and most importantly we have total confidence in the quality of our data."

Charlie Lord, Resource Geologist, U & D Coal Limited



www.micromine.com

MICROMINE Corporate
174 Hampden Road
Nedlands WA 6009 Australia
T: +61 (0)8 9423 9000
E: marketing@micromine.com

MICROMINE Africa
MICROMINE Brazil
MICROMINE Canada
MICROMINE Central Asia
MICROMINE China
MICROMINE Indonesia
MICROMINE Mongolia
MICROMINE Russia
MICROMINE Turkey
MICROMINE Ukraine
MICROMINE United Kingdom
MICROMINE USA

Tel: +27 (0)87 150 7580
Tel: +55 31 3347 5904
Tel: +1 (604) 646 8924
Tel: +7 (727) 247 25 88
Tel: +86 1861 079 8400
Tel: +62 21 7590 5333
Tel: +976 7011 3889
Tel: +7 (495) 665 4655
Tel: +90 312 241 5571
Tel: +380 44 332 3858
Tel: +44 (0) 203 176 0080
Tel: +1 (303) 996 6270

mmafrica@micromine.co.za
mmbrazil@micromine.com
mmcanada@micromine.com
mmkz@micromine.com
mmchina@micromine.com
mmindonesia@micromine.com
mmmongolia@micromine.com
mmrussia@micromine.com
gssiyok@micromine.com
ababynin@micromine.com
mmuk@micromine.com
mmusa@micromine.com