

Micromine 2016

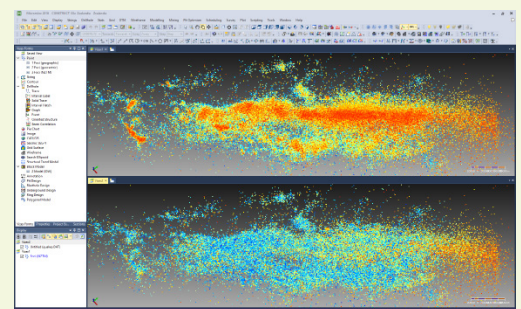
Micromine is a comprehensive and easy-to-use exploration and 3D mine design solution, which offers integrated tools for modelling, estimation, design, optimisation and scheduling.

Now in its 30th year, MICROMINE has maintained its leading reputation by regularly releasing new software versions which build upon the strengths of its solutions. MICROMINE is proud to release the latest version of its leading exploration and 3D mine design solution, Micromine 2016.

Micromine 2016 delivers improved flexibility, functionality and performance, with a variety of user benefits relevant to both exploration and mining operations.

New Features in Micromine 2016 include:

- Full **Windows 10** Certification (pending). Upgrade your machine with confidence knowing there are no compatibility issues.
- New **3D PDF** output provides an easy way to share 3D Micromine models with non-users. Recipients can interact with models almost as if they were using Micromine.
- New **dynamic field expressions** extend Micromine’s capabilities by combining multiple fields, constants, functions and operators. Use them anywhere you would use an input field, such as calculations, filters, labels, or colour sets.
- New **Drag-and-drop** is ideal for file sharing. No need to copy external files to the project folder; simply drop them into Vizex or the File Editor and let Micromine handle them for you. It works beautifully with the new **project explorer** pane, which is just like having Windows Explorer inside Micromine.
- New **drillhole planning** provides tools for designing straight or curved holes. In a mature area simply copy an existing deviated hole as a template. Convert planned holes to collar/survey files for sharing with drilling contractors.
- New **Auto build pit** quickly produces a complete pit design, eliminating the need to manually produce multiple designs before settling on a final design.
- Integrated **production** (new) and **activity** (enhanced) schedulers provide a one-stop-shop scheduling solution. The new production scheduler uses industry-standard linear programming solvers to optimise long-term schedules.



Using Maximum Intensity Projection (MIP) to visualise earthquake focal points, coloured by magnitude. The MIP-enabled view (top) shows an obvious linear trend together with a number of nearby clusters. The bottom view, showing the data as it would appear in Micromine 2014, is much harder to interpret.

MICROMINE's leading exploration and 3D mine design solution

Micromine 2016 has many enhancements, the most significant of which are:

Application

- New web-based help documentation, with built-in help for offline use
- New dynamic field expressions can be used anywhere you would use a file field as input

Projects

- New: Project | Open displays a sortable list of projects and their metadata
- New Project Manager (File | Project | Manage) gathers project management tools in one place

File Editor

- New Hide Unfiltered Records option (via Use Filtered Records toolbar button or Filter menu)

Import/Export

- New Vizex 3D PDF output produces interactive PDFs with layer control and rotate, pan, zoom, measure etc

Vizex - Display and Editing

- New: Drag-and-drop supported file types into Vizex from outside of Micromine
- New Project Explorer pane provides direct access to project files; drag files directly into Vizex
- New smart Snap to Object mode reduces the need to change snap modes while editing
- New String Coalesce function and corresponding toolbar button for intelligently joining multiple strings

Exploration

- New interactive Drillhole Planning tools including using an existing hole as a template, and designing straight or curved from-collar and from-target designs
- New interactive Drillhole Log, a Plot Editor-like display with many page layout controls and interactive intersection calculations

Wireframing

- New Vizex Quick Find Wireframes option
- New Wireframe Grade Tonnage Material Types reporting, for reporting against complex hierarchical material groups

Pit Optimisation

- New Pit Optimiser reporting and charting tools: Display and report your results directly within Micromine
- Significant Pit Optimiser workflow and user interface overhaul; now divided into separate Setup, Optimise, Analyse dialogs

Resource Estimation

- New Block Model Assign assigns attributes of rotated and/or sub-blocked models to a target file
- Enhanced: Indicator and multiple indicator kriging dialogs are now combined into one; Block Model Report now supports MIK cutoff set
- Improved support for rotated block models (e.g. DTM Generate Z Values, Statistical Block Model)

Mining

- New: Auto Build Pit quickly creates a pit for evaluating design issues and haul road openings
- New Auto Re-align Pit Strings option adjusts multiple benches in a single operation
- New Create Mining Blocks option for quickly dividing a solid into blocks for open pit scheduling
- New: Sidewall to Centreline options create the median line between a pair of sidewall strings and calculate left and right sidewall offsets relative to the centreline

Scheduler

- New: Scheduler now divided into separate long-term (production) and short-term (activity) schedulers
- New: Optimised long-term schedule output based on industry-standard linear programming solvers
- New Quick Filter for only showing tasks (wireframes) of interest
- New attribute filter supports filtering by any attribute

Implicit Modelling

- New: Implicit Modelling Structural Trend incorporates a locally varying structural trend in the modelling process
- New RBF solver options: choose from sphere covering, partitioned, or full RBF
- New Implicit Model Output File option saves a mathematical implicit model for later reuse

"Micromine's ultimate strength lies in its incredibly intuitive nature and ease-of-use, allowing maximum individual productivity levels. For example, it is easy and quick to import data into Micromine and for exploration geologists to produce plans and sections, activities that can be incredibly time consuming using other software solutions" **Tony Miller, Technical Services Coordinator, Paladin Energy Limited**



www.micromine.com

MICROMINE Corporate
174 Hampden Road
Nedlands WA 6009 Australia
T: +61 (0)8 9423 9000
E: marketing@micromine.com

MICROMINE Africa
MICROMINE Brazil
MICROMINE Canada
MICROMINE Central Asia
MICROMINE China
MICROMINE Indonesia
MICROMINE Mongolia
MICROMINE Russia
MICROMINE Turkey
MICROMINE Ukraine
MICROMINE United Kingdom
MICROMINE USA

Tel: +27 (0)87 150 7580
Tel: +55 31 3347 5904
Tel: +1 (604) 646 8924
Tel: +7 (727) 247 25 88
Tel: +86 1861 079 8400
Tel: +62 21 7590 5333
Tel: +976 7011 3889
Tel: +7 (495) 665 4655
Tel: +90 312 241 5571
Tel: +380 44 332 3858
Tel: +44 (0) 203 176 0080
Tel: +1 (303) 996 6270

mmafrica@micromine.co.za
mmbrazil@micromine.com
mmcanada@micromine.com
mmkz@micromine.com
mmchina@micromine.com
mmindonesia@micromine.com
mmmongolia@micromine.com
mmrussia@micromine.com
gssiyok@micromine.com
ababynin@micromine.com
mmuk@micromine.com
mmusa@micromine.com